

DiscSpreader®

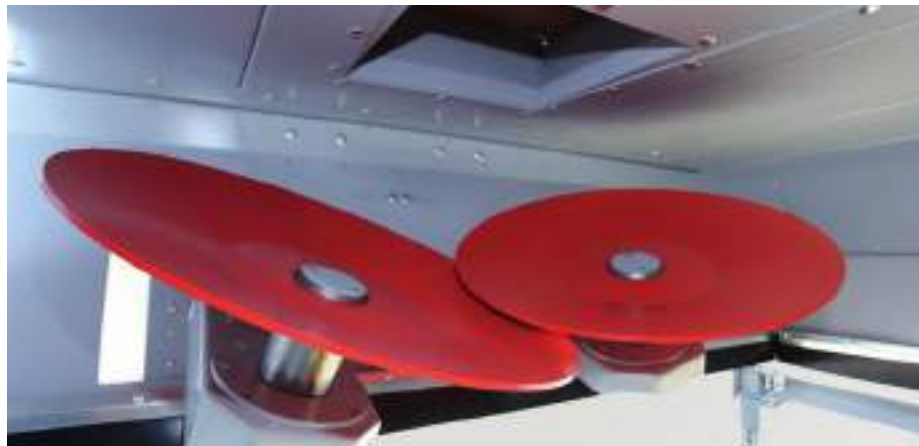


Product Description

DiscSpreader®

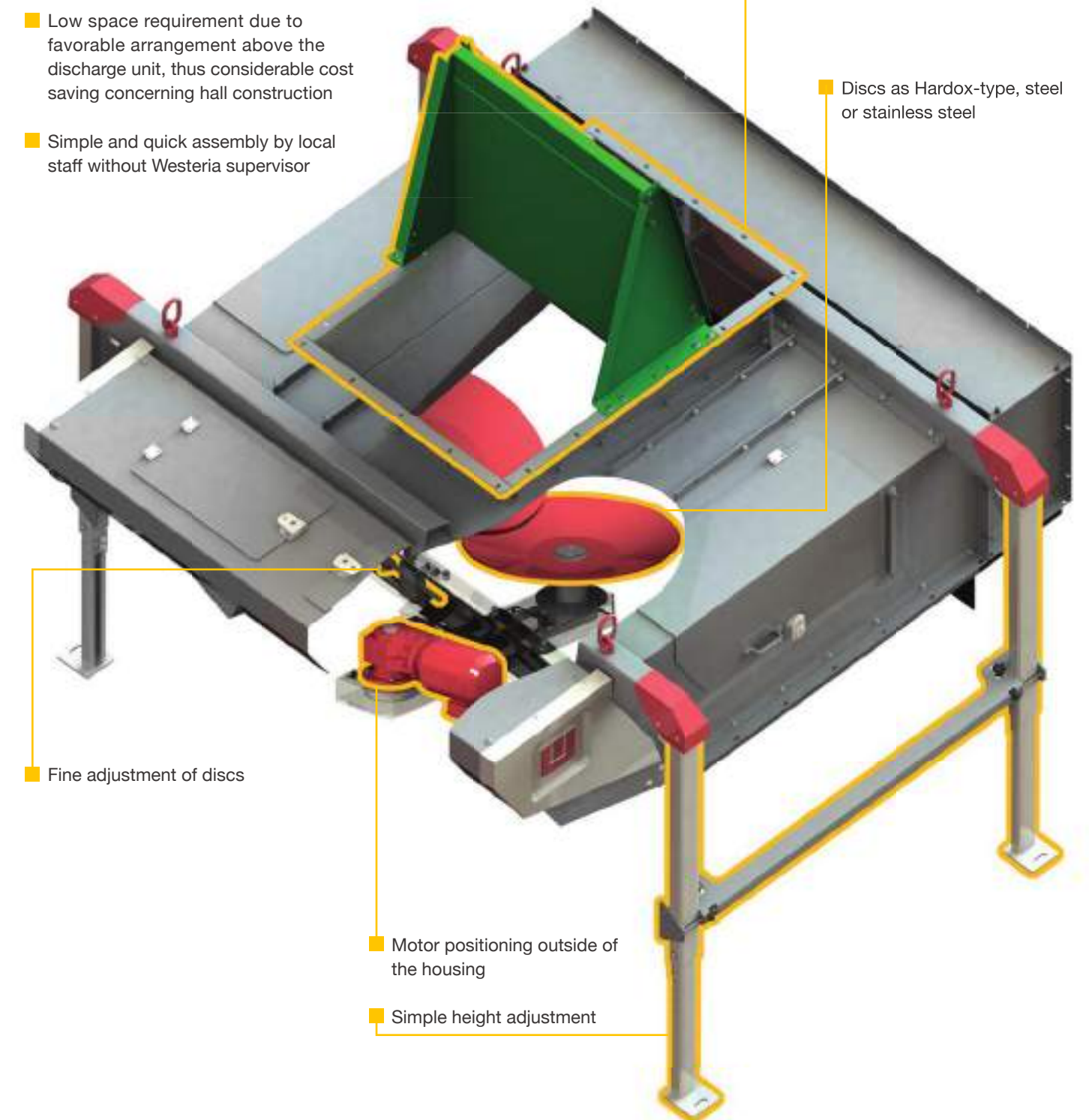
Brilliantly simple – simply brilliant – this is one way to describe the proven Westeria® **DiscSpreader®**. What seems to be at first glance just constructive and simple, impresses upon closer inspection with advanced technology in the details. Even in case of non-linear material feeding, the **DiscSpreader®** guarantees a perfect and smooth material distribution of glass, wood, compost, scrap, slag, commercial and household waste for all separation processes.

With the new **DiscSpreader®3** Westeria® additionally offers a patented system that can be mounted directly at a conveyor belt. Also for the **DiscSpreader®3** there is the following rule: No matter if NIR, Eddy Current or windsifter, the Westeria® **DiscSpreader®** is always the perfect device to distribute the material flow over an even width. Due to its extremely compact design, Westeria® **DiscSpreader®** only need little space and offer maximum efficiency.



Advantages

- Shortest delivery time within 5 weeks
- Extremely improved material distribution compared to a vibrating conveyor
- Minor dynamic loads, thus no decoupled special steel construction
- Low space requirement due to favorable arrangement above the discharge unit, thus considerable cost saving concerning hall construction
- Simple and quick assembly by local staff without Westeria supervisor
- Distribution widths from 1.500 mm to 3.000 mm (so a feeding width of 500mm enables six time transfer width)
- Spreading advantage especially in case of vibration-absorbing materials, e.g. light foils
- Can be used for all separation aggregates
- All aggregates can be transported in 20" standard sea containers
- Feeding from all sides possible by adaption of additional funnels
- Discs as Hardox-type, steel or stainless steel



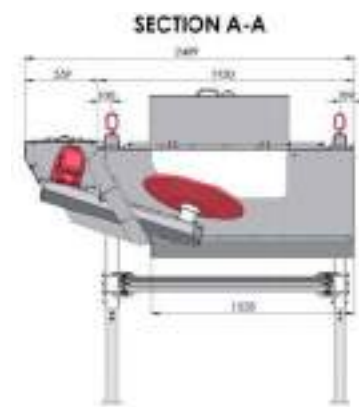
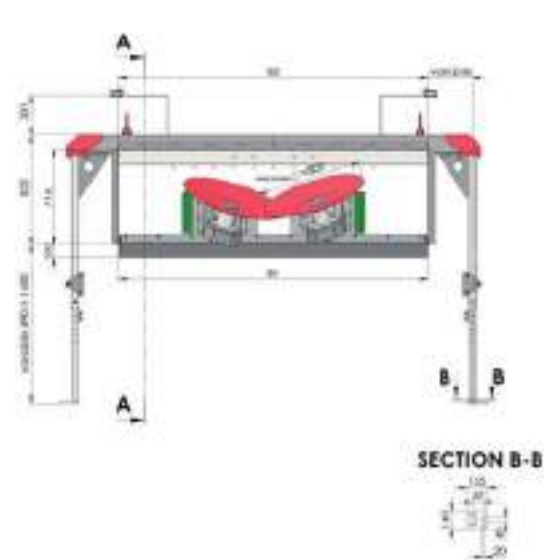
■ Fine adjustment of discs

■ Motor positioning outside of the housing

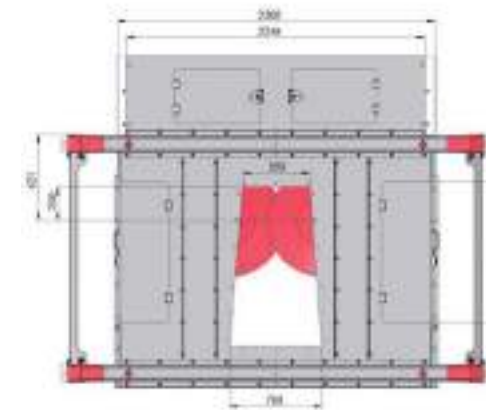
■ Simple height adjustment

Technical data

DiscSpreader®1 Ø 800 mm

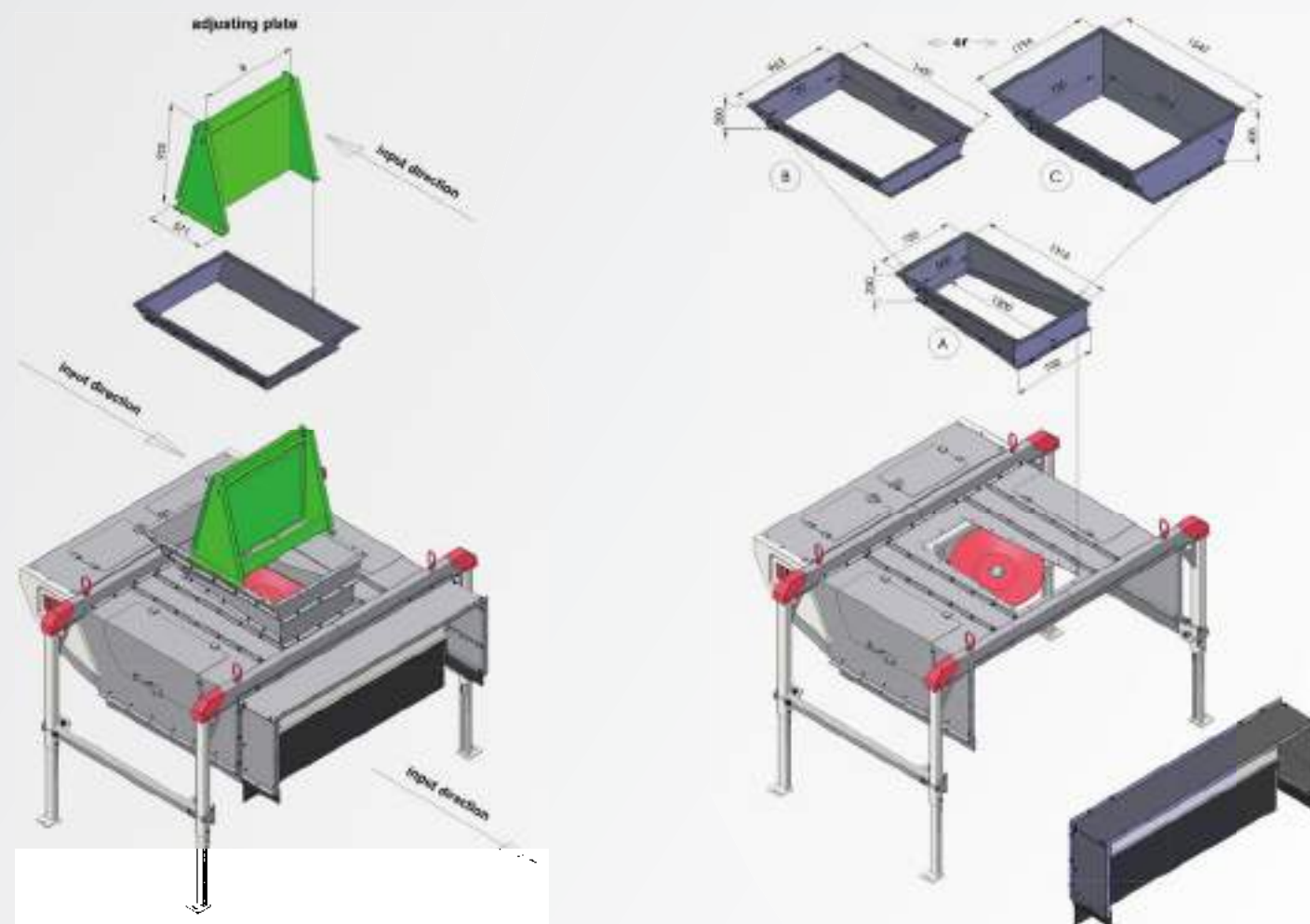


Model	800/1500	800/2000	800/2500	800/3000
B1 (mm)	1330	1830	2330	2830
B2 (mm)	1830	1830	2330	2830



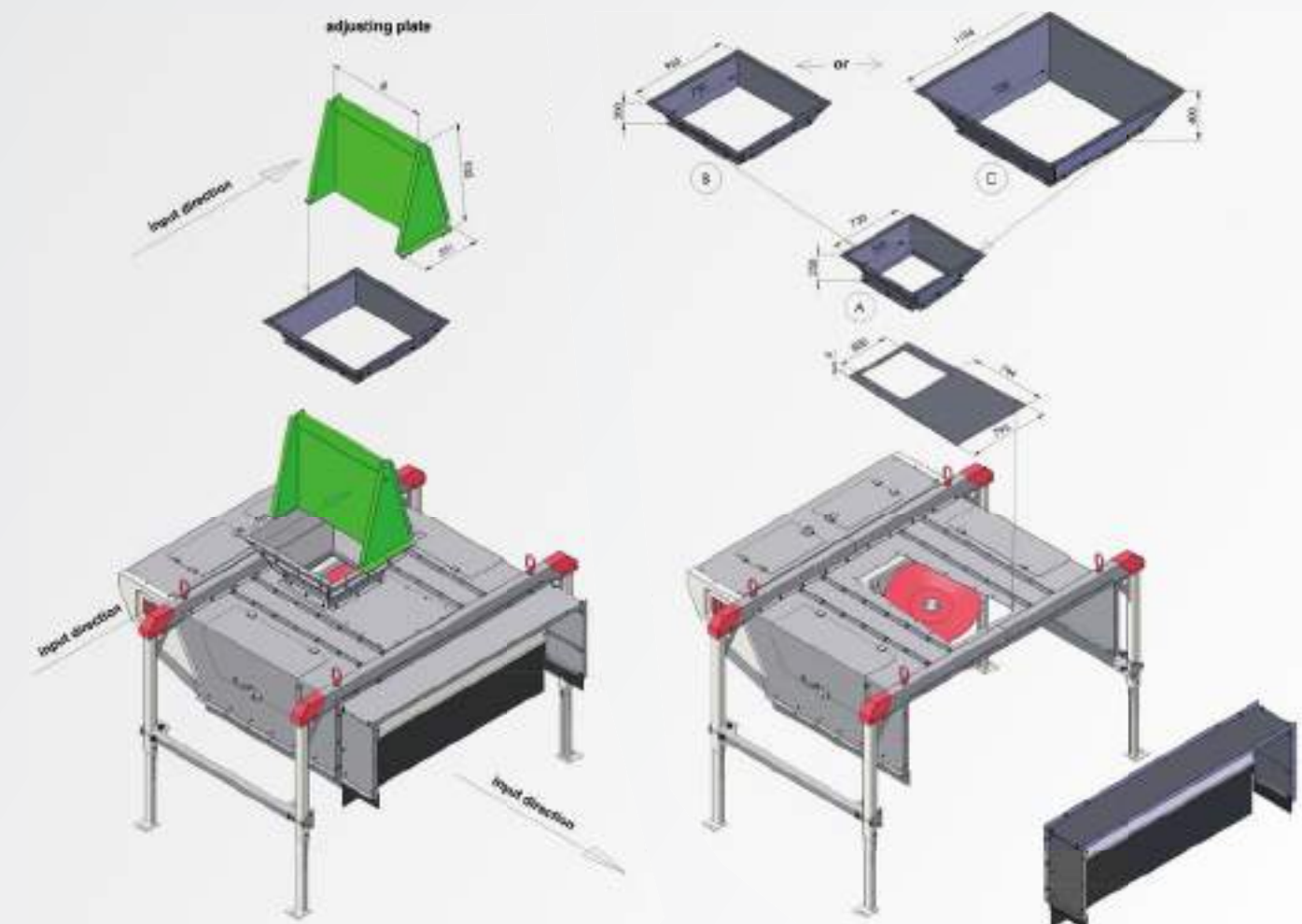
Chutes for in line input direction

Model	(A)	(B)	(C)
B (mm)	730	963	1194



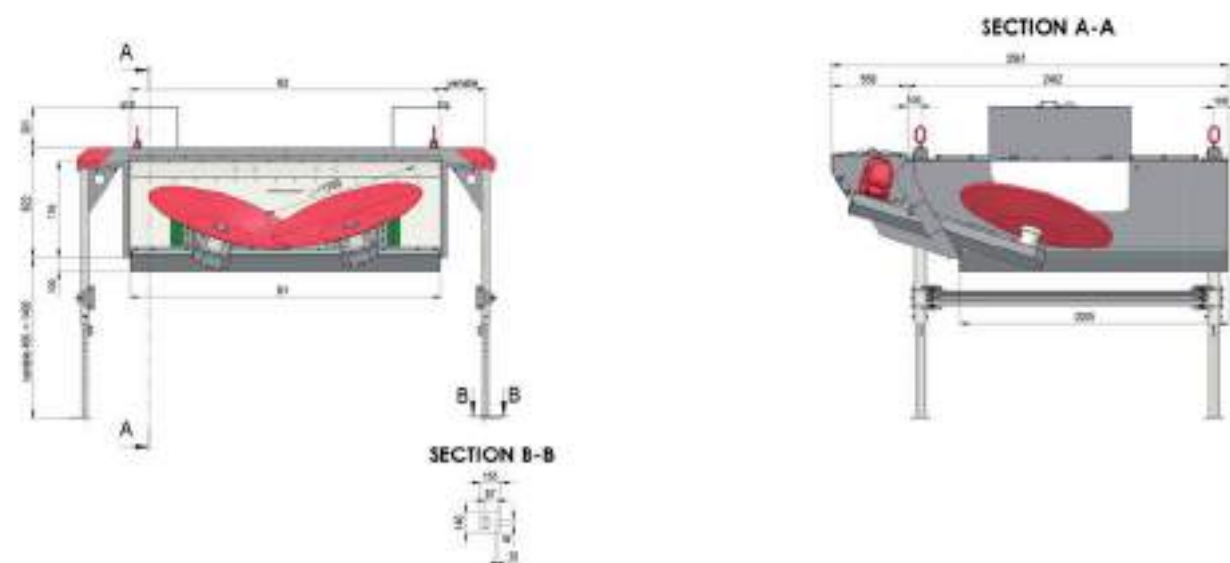
Chutes for 90° input direction

Model	(A)	(B)	(C)
B (mm)	730	963	1194

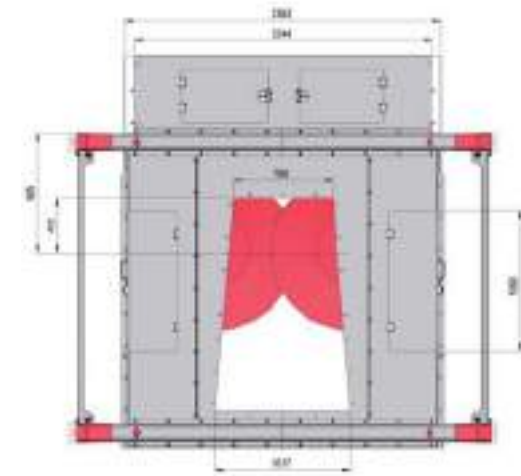


Technical data

DiscSpreader®1 Ø 1200 mm

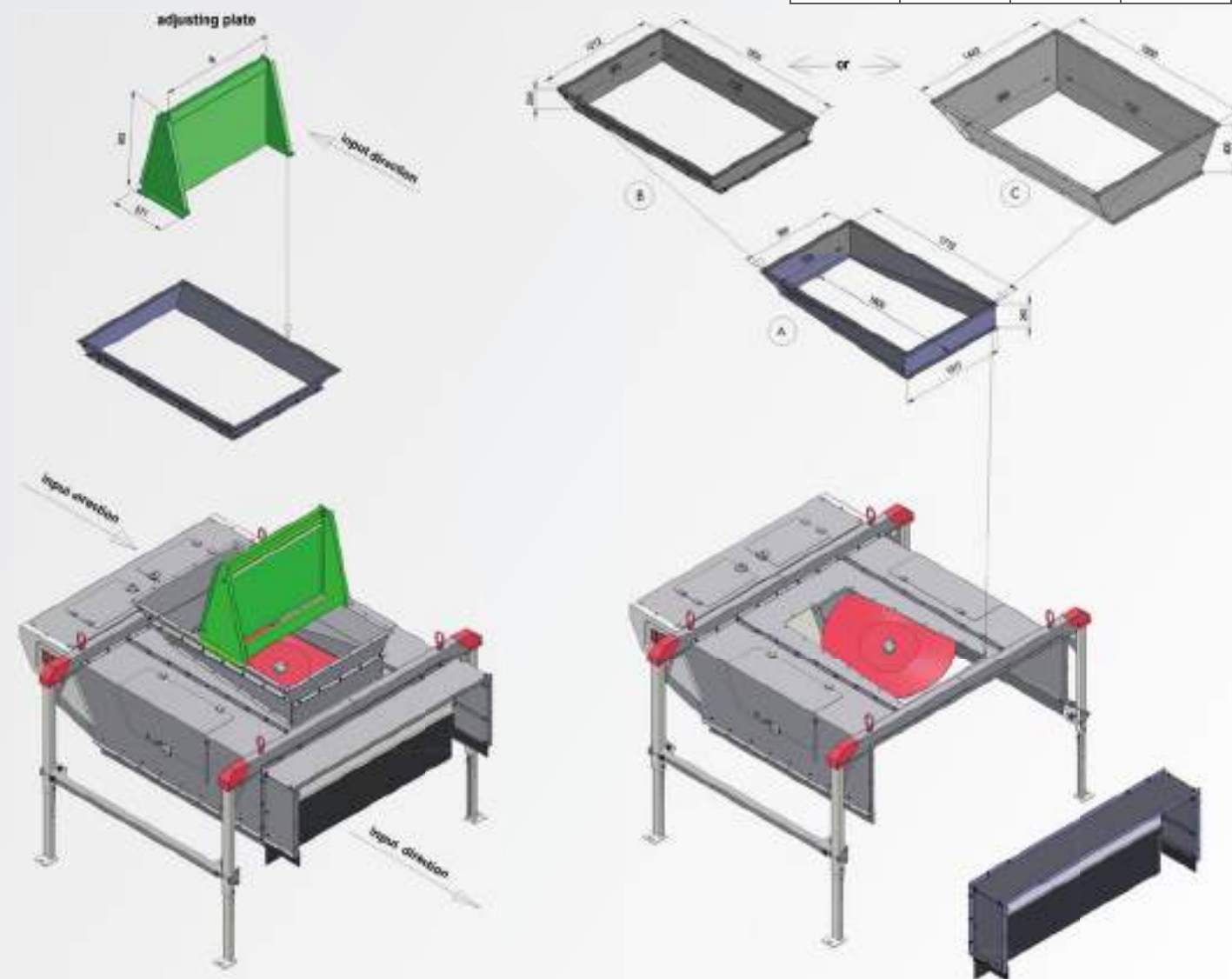


Model	1200/2000	1200/2500	1200/3000
B1 (mm)	1830	2330	2830
B2 (mm)	2330	2330	2830



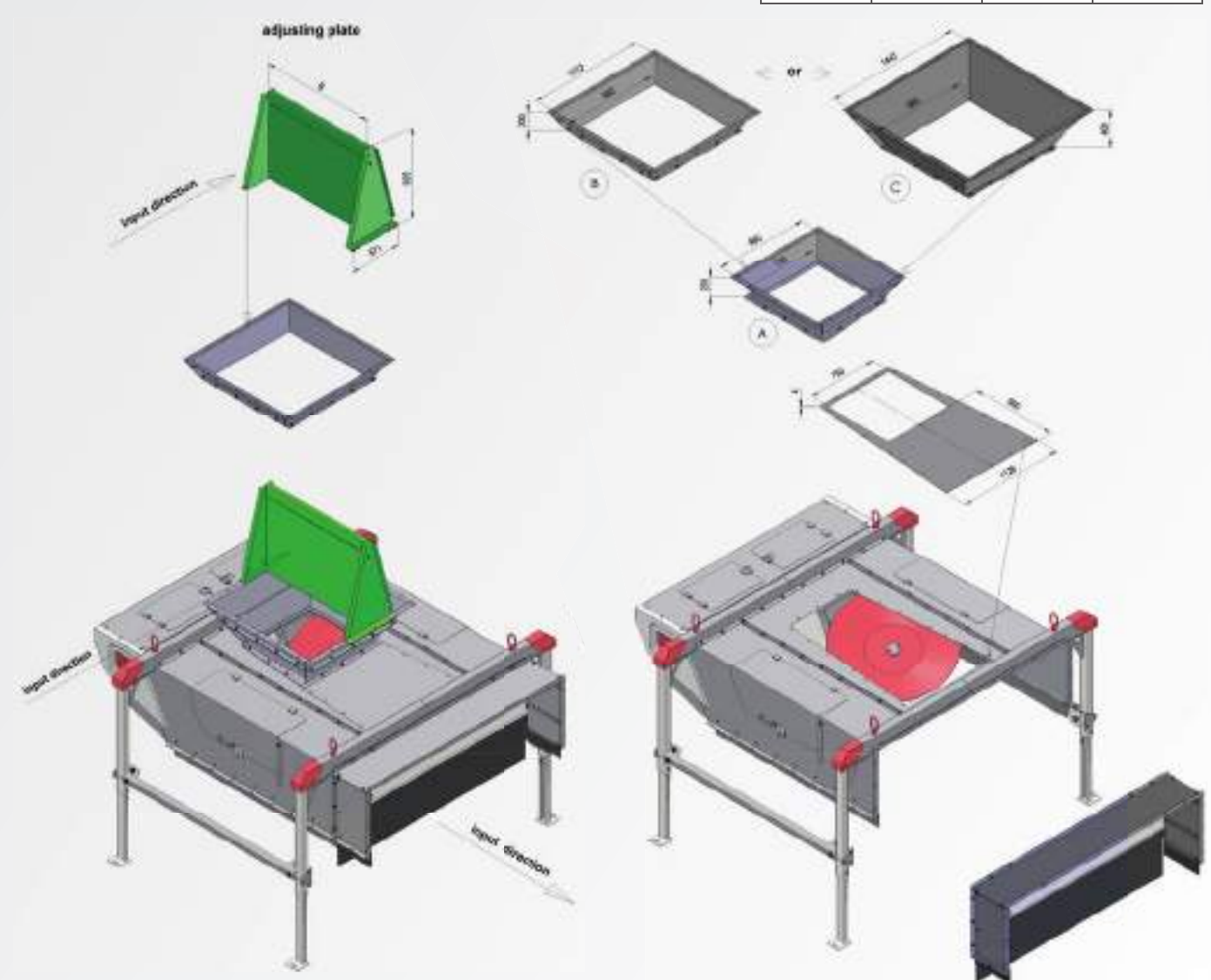
Chutes for in line input direction

Model	(A)	(B)	(C)
B (mm)	980	1212	1443



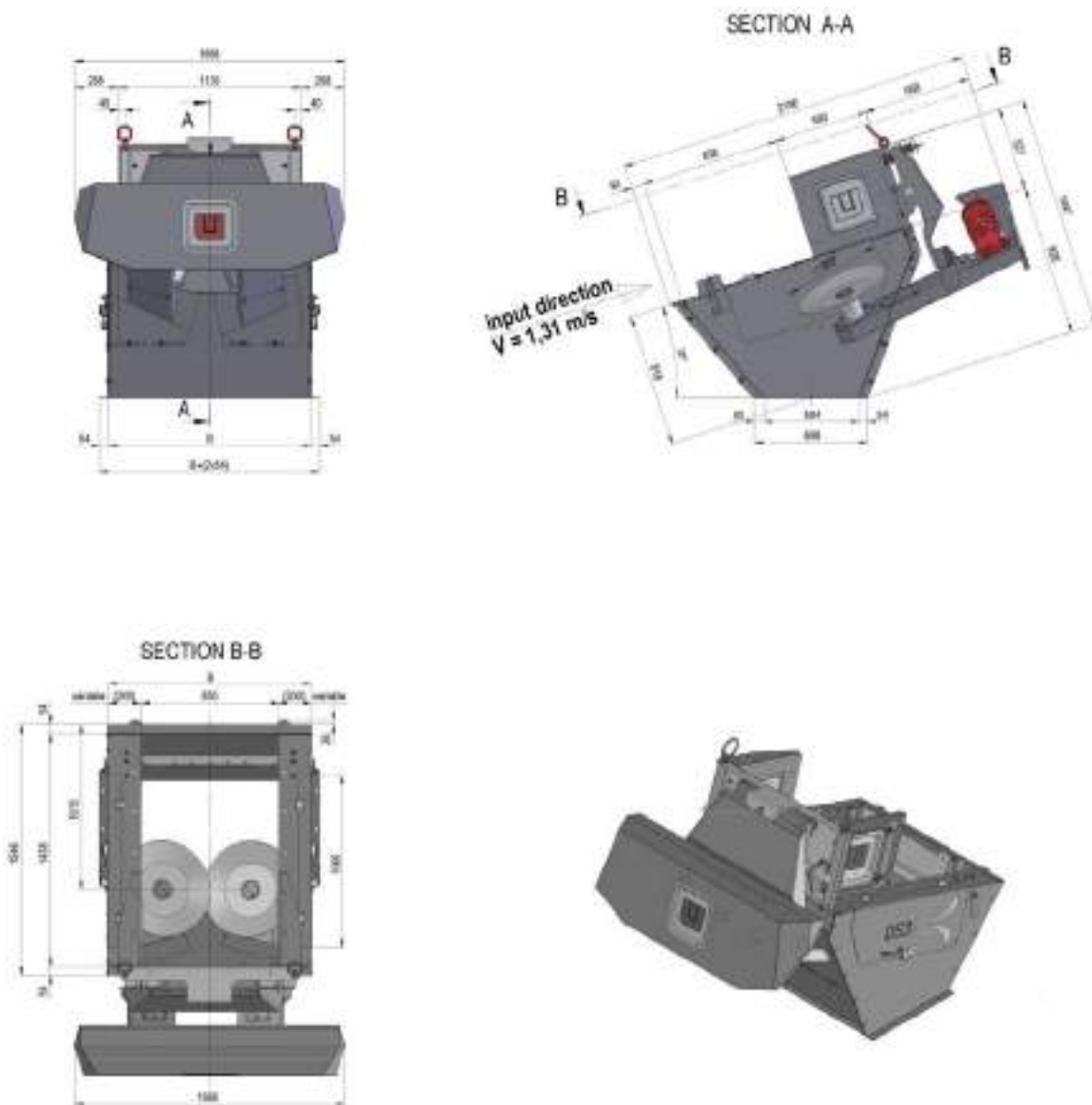
Chutes for 90° input direction

Model	(A)	(B)	(C)
B (mm)	980	1212	1443



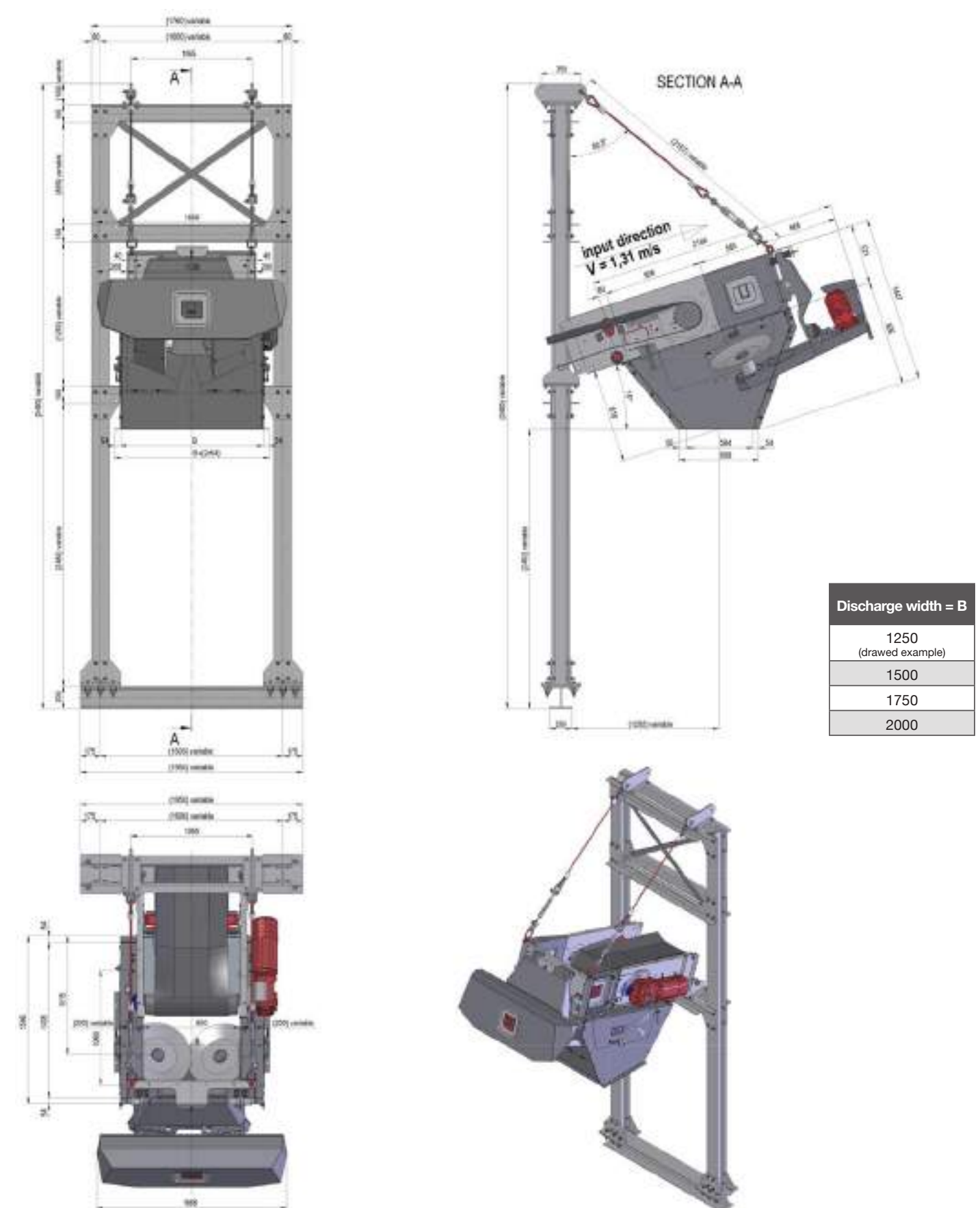
Technical data

DiscSpreader®3 Ø 600 mm standard



Discharge width = B
1250 (drawn example)
1500
1750
2000

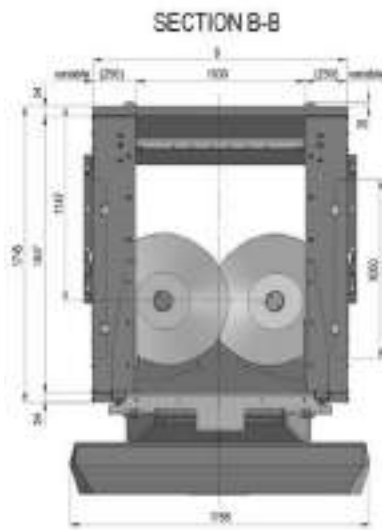
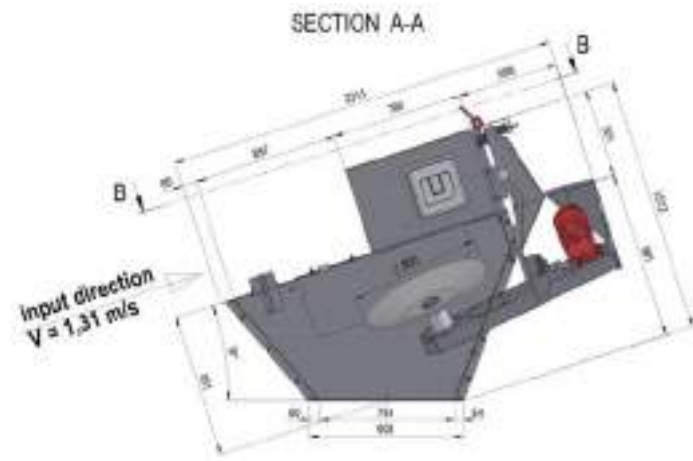
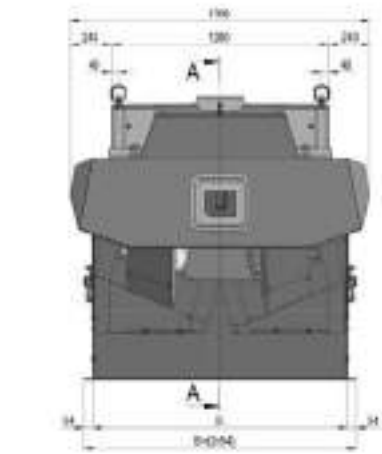
DiscSpreader®3 Ø 600 mm with pylon support



Discharge width = B
1250 (drawn example)
1500
1750
2000

Technical data

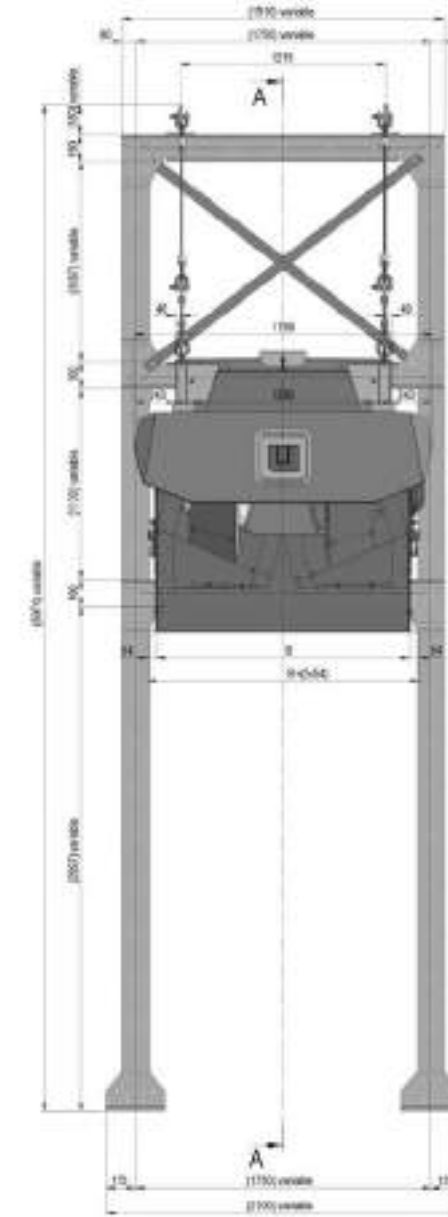
DiscSpreader®3 Ø 800 mm standard



Discharge width = B

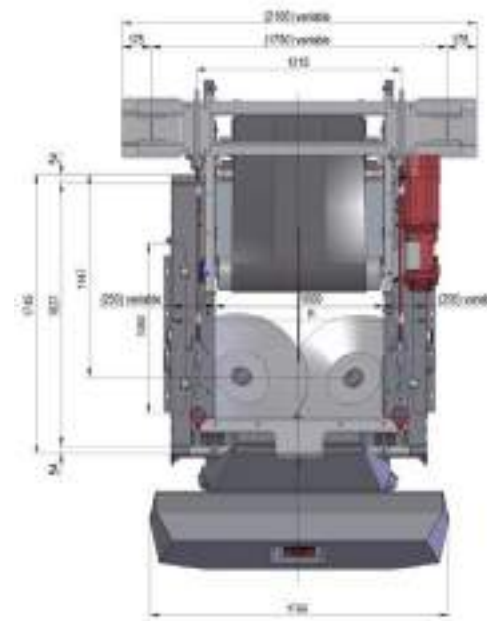
1500 (drawn example)
1750
2000
2250
2500
2750
3000

DiscSpreader®3 Ø 800 mm with pylon support



Discharge width = B

1500 (drawn example)
1750
2000
2250
2500
2750
3000



Westeria® Promotes Values

Production, logistics, recycling – specialized solutions are needed where piece and bulk goods are conveyed, mixed recyclable materials separated and sorted: efficient, sound, permanently reliable, tailor-made for special requirements.



Westeria® Fördertechnik GmbH
Raiffeisenstr. 2
D-48346 Ostbevern

Fon +49 (0) 25 32/88-0
Fax +49 (0) 25 32/77 70

verkauf@westeria.de
www.westeria.de

