

M&J PreShred 4000M on crawlers

Waste Pre-Shredders from M&J Recycling

Crawler version
– your first choice





PreShredder crawler version – excellent onsite mobility and easier to operate

M&J Recyclings PreShred 4000M makes it easier than ever before to process all kinds of waste in almost any location. The crawler version has been designed to deliver improved performance and increased efficiency. Drawing on our vast experience of designing mobile units, the crawler version allows for excellent onsite mobility.



The crawler units can be moved during operation, and are easy to load and transport. It features all the robustness and strength you'd expect from a M&J pre-shredder, with the added benefits of being easier to operate, more efficient to run and easier to service, all of which helps to reduce running costs.

M&J Recycling shredding technology is based on an extremely aggressive knife design and open cutting table, which provides outstanding performance when dealing with mixed and challenging materials. These key features make M&J pre-shredder, units extremely resistant to wear caused by materials and waste normally considered as un-shredable; including solid steel, reinforced concrete and rocks.



PLASTIC LOOSE AND PLASTIC BALES



TREE STUMPS



MATRESSES

Advanced technology

The M&J PreShred 4000 is a large waste shredder capable of effectively and reliably shredding virtually any type of material. This waste shredder is designed to meet the special needs of plants in which the incoming material varies greatly in terms of size and composition and can contain unknown quantities of steel, stones, and concrete. Examples include recycling plants for refuse derived fuel (RDF), incinerators, and large hazardous waste plants with challenging inputs such as household waste, bulky waste, construction and demolition waste, chemical waste, industrial waste, tree stumps, carpets, mattresses, railway sleepers and refrigerators, as well as compacted waste bales.

Large throughput

Throughput can be as high as 100 tons/hour, depending on the type of input, the number of knives specified for the cutting table, and the loading procedure. The interaction between the rotating knives on these two shafts running asynchronously and in both directions ensures that the input material is constantly in motion, thus preventing bridging and providing maximum shredding capacity.

Speed of the conveyor belt to be precisely adjusted to suit the waste being processed

Low loading height
- easier to load using
also a smaller loader

Easier and more
efficient to operate
- larger hopper

Each cooling unit
can be operated
separately; further
improving energy
efficiency

Good access to conveyor
rollers for easy cleaning and
maintenance, results in a longer lifespan

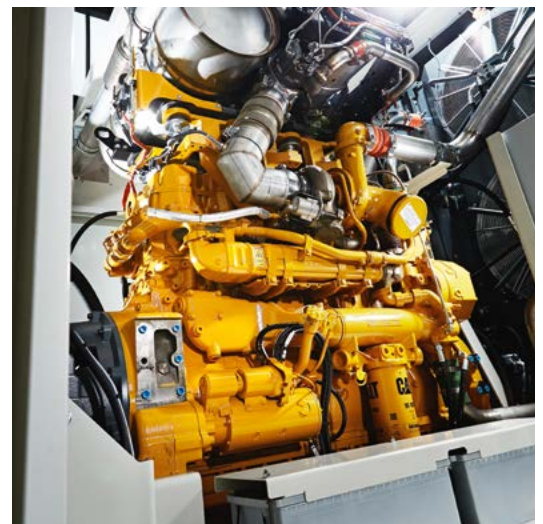
Can be moved during
operation - saving time
and energy

Operational in
temperatures up to
45°C, increasing the
range of use

Cat C15 Tier 4 Final, 540 HP to full fill the emission standards in the USA and Europe. Also available in Tier 3 for other geographical areas



Remote control
easy and intuitive
to use



Ladder mounted on the cutting table to ensure good access



Crawlers based on years experience

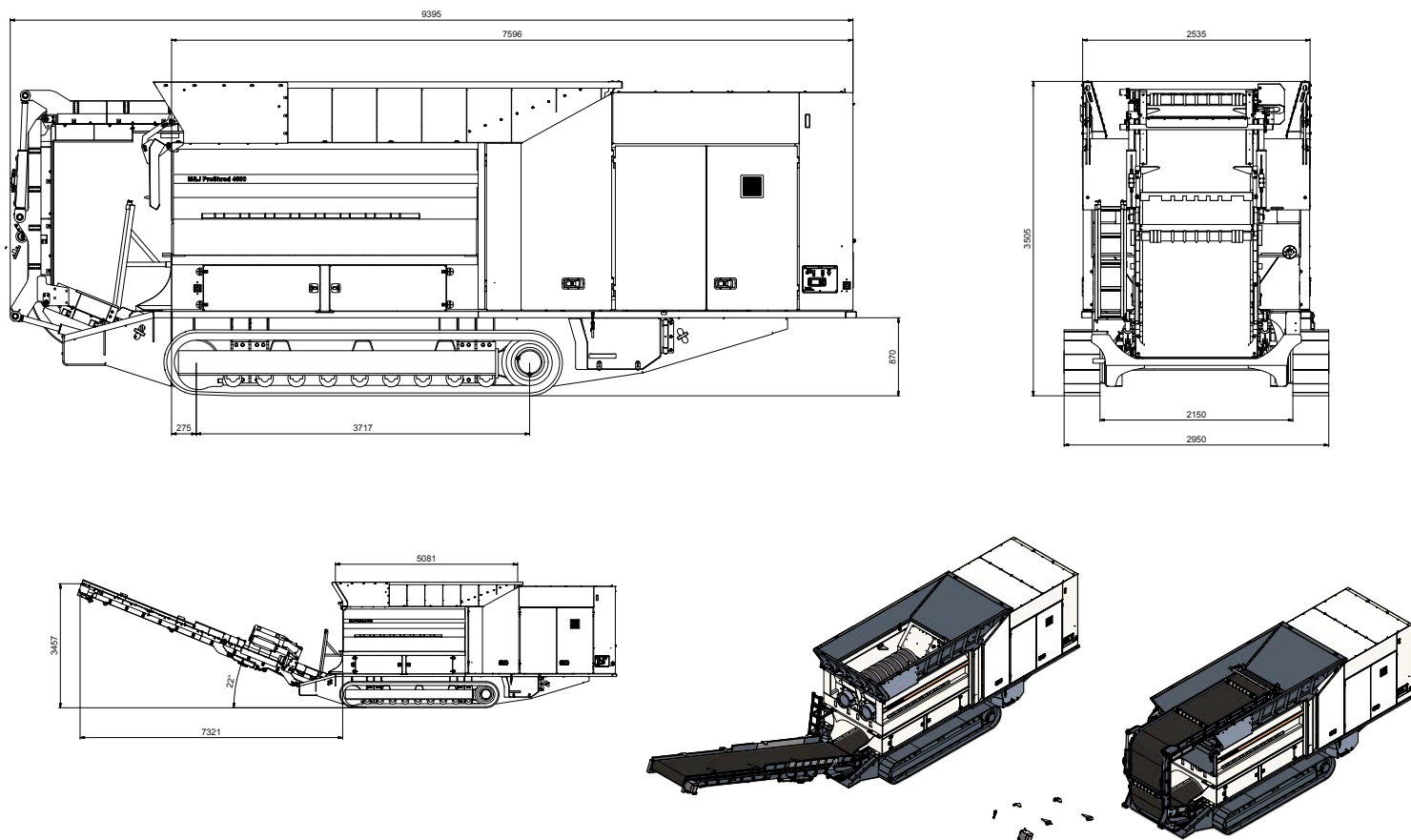


User friendly touch-screen with colour display offering simple and easy operation and diagnostics

Extremely aggressive knife design and open cutting table



Spacious power pack for easy service access



M&J Metrics for Waste Recycling

M&J Recycling offers a digital solution to help further optimize your M&J shredder equipment operations. Through remote data monitoring, M&J Metrics gives you access to critical insights on your fleet's performance and maintenance needs, with optional access to expertise to help you analyze the data.

The challenge: Having access to the right information. Your waste shredder equipment is often a key asset that keeps your business running smoothly and efficiently. From time to time a shredder can come up with an alarm, and it can be very difficult to detect and react on a given alarm. Without having the right information at the right time to make important operational or maintenance decisions, extended downtime can set in and production rates can suffer, challenging your bottom line.

The solution: M&J Metrics

Every shredded ton of waste count at the end of the day. And making the most out of your operations depends on data you can trust. Through a remote communication device mounted on your equipment, M&J Metrics brings you key operational and maintenance data – from utilization rates, to production levels and fuel or power consumption. With secured access on a PC, tablet or smart phone, this solution allows for data driven decisions that impact your operations.

**M&J PreShred
4000M on crawlers**

Specification



Ninja star



Dragon sword



Classic



Tomahawk



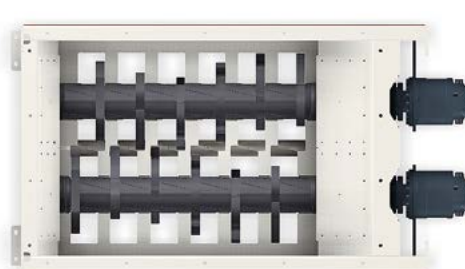
Butterfly



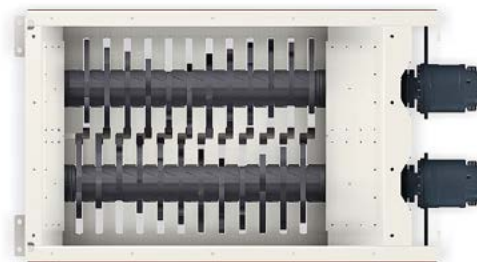
Tachi



Samurai



cutting table 4000
- 6 knives



cutting table 4000
- 12 knives

Specification

| | | |
|--|-----|--------------------|
| Overall dimensions std with hopper (LxWxH) | mm | 9395 x 2950 x 3505 |
| Weight (total included standard conveyor) | ton | 35 |
| Standard color | RAL | 7011, 9002 |
| Loading height (with standard hopper) | mm | 3505 |
| Cutting area | mm | 2420 x 2000 |

Power pack

| | | |
|----------------------------|--------|---------------------------------|
| Diesel motor | kW | 403 CAT C15 |
| Electric control unit | | Danfoss Plus+ 1 |
| Drive principle | | Double hydrostatic transmission |
| Fuel consumption – Average | l/hour | 60 |

Chassis

| | | |
|--------------------------------|----|--------------|
| Standard belt conveyor (L x W) | mm | 10250 x 1200 |
| Discharge height | mm | 3457 |

Cutting table

| | | |
|--------------------------|-----|-------------------|
| Number of shafts | | 2 |
| Rotating speed* | rpm | 16-41 / 27-56 |
| Number of knives | | 8 / 9 / 10 / 12 |
| Number of counter knives | | 16 / 18 / 20 / 24 |
| Cutting area (L x W) | mm | 2420 x 2000 |
| Weight | ton | 12.5 – 14.9 |

Grain size **

| | | |
|-----------|----|-------|
| 8 knives | mm | < 300 |
| 9 knives | mm | < 250 |
| 10 knives | mm | < 200 |
| 12 knives | mm | < 125 |

Capacity per hour***

| | | |
|------------------|-----|-----------|
| Household waste | ton | up to 100 |
| Demolition wood | ton | up to 70 |
| Industrial waste | ton | up to 35 |
| Bulky waste | ton | up to 50 |

* Standard / HDC ** 90% less than *** Depending on loading, grain size and density of the input material



**FOR MORE INFORMATION, CONTACT
YOUR LOCAL M&J REPRESENTATIVE,
OR CONTACT YOUR DEALER DIRECTLY.**

MJRECYCLING.COM

M & J | Vejlevej 5 | DK-8700 Horsens | Tel: +45 7626 6400 | sales@mjrecycling.com

The information in this document is provided for guidance only and as is without warranty of any kind, either express or implied, including but not limited to the implied warranties of merchantability, fitness for a particular purpose or non-infringement. Information in this document may include information not appropriate to specific configurations, or information which has not been updated. M&J Recycling has the right to make changes in the document without notice. Not all products or services are available in all countries. In no event shall M&J Recycling be liable for any damages. We reserve the right to make changes and improvements without notice.
*M&J PreShred 4000M Crawler, UK". M&J Recycling, september 2021.