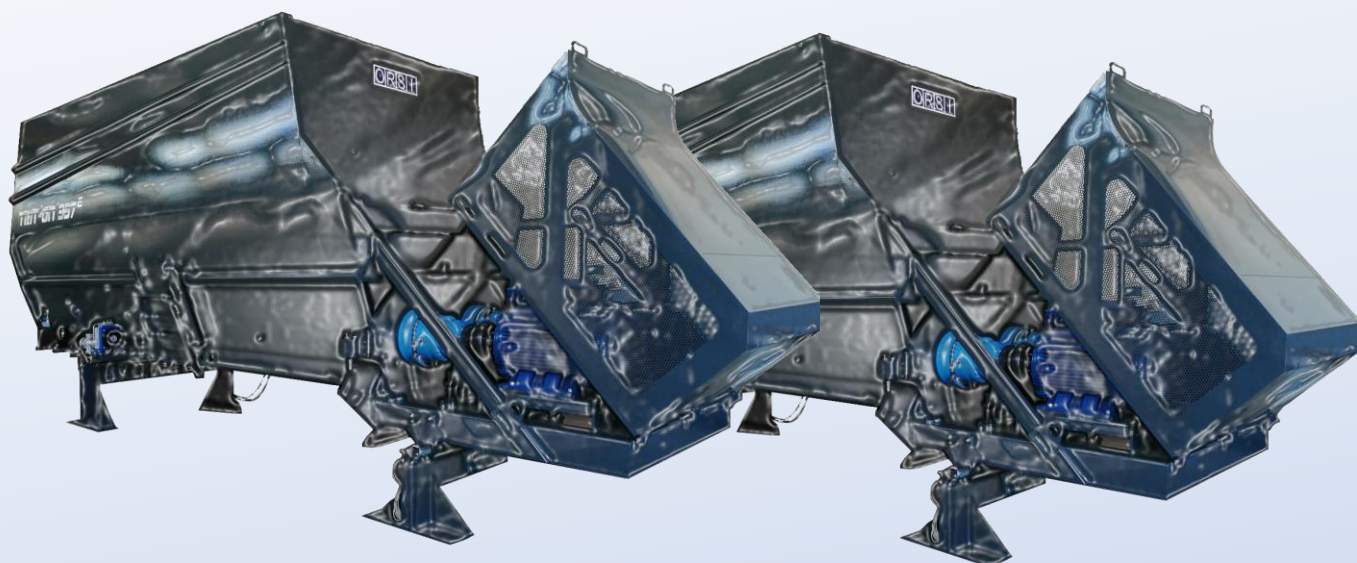


TRIT-ON



MODELLO	CAPACITÀ VASCA	MOTORI ELETTRICI	CAPACITÀ PRODUTTIVA
TRIT-ON 156	15 mc	2x55 kW	10 t/h
TRIT-ON 186	18 mc	2x75 kW	15 t/h
TRIT-ON 216	21 mc	2x75 kW	20 t/h
TRIT-ON 357	35 mc	2x90 kW	25 t/h

CARATTERISTICHE PRINCIPALI

N°02 coclee controrotanti dotate di lame di taglio

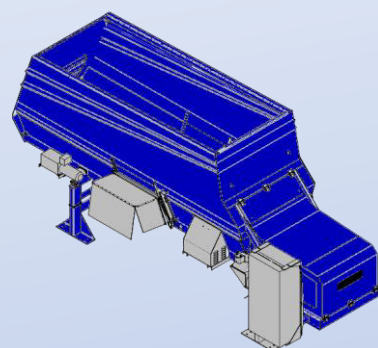
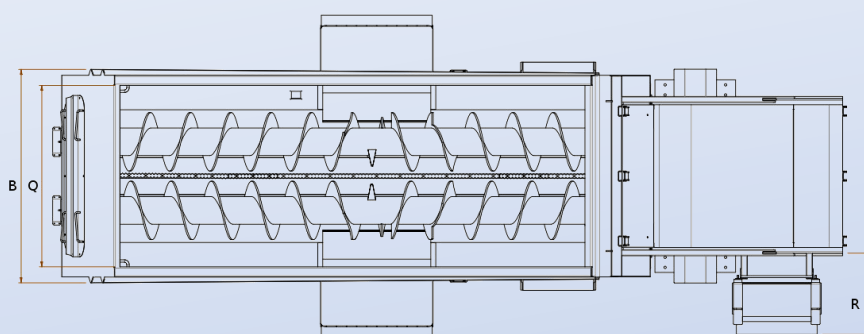
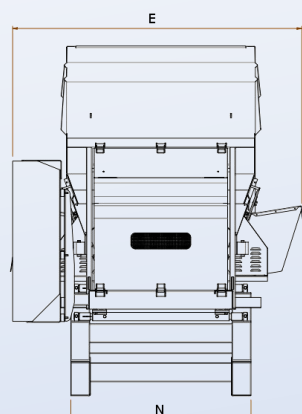
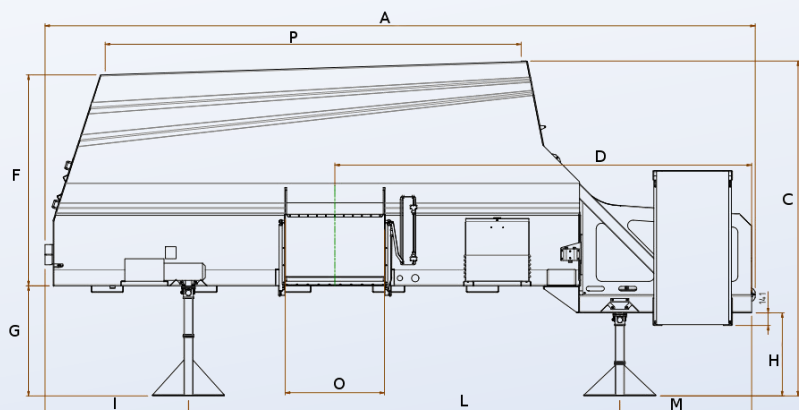
Quadro elettrico a bordo macchina

Impianto pesa elettronica

Scarico centrale su entrambi i lati

Segnale luminoso di indicazione apertura portina di scarico

TRIT-ON



TRIT-ON	A	B	C	D	E	F	G	H
156 E	6550	2115	3000	3915	3065	2190	850	550
186 E	7050	2115	3000	4165	3065	2190	850	550
216 E	7875	2115	3300	4620	3065	2340	850	550
357 E	8375	2535	3685	4820	3270	2835	850	550

TRIT-ON	I	L	M	N	O	P	Q	R
156 E	1590	3460	1460	1910	1100	3420	1800	806
186 E	1590	3960	1460	1910	1100	3920	1800	806
216 E	1590	4785	1460	1910	1100	4615	1800	806
357 E	1900	4985	1460	2085	1100	4880	2200	806