



eWender
First in the Industry..



...Battery Powered, Electric
Compost Turner



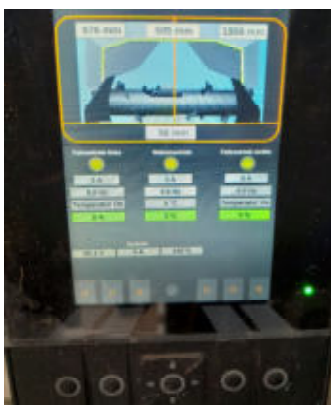
eWender E 350 and E 500



The eWender makes an important contribution to the composting of biogenic waste materials. It enables the operator to control and optimize his process while achieving the highest possible product quality. The eWender provides maximum efficiency without the need for fossil fuels.

EV Technology | Zero Emissions | Lowest Energy Costs | Clean Technology

Once the windrow has been identified, the eWender turns it without the need of operator input. When the windrow is completed, operator is notified, and the eWender automatically switches to idle mode. The eWender is then driven by operations remote control.



- Radio controlled with semi-autonomous functions
- No greenhouse gas emissions
- Complete process control
- EV Technology assures huge maintenance savings
- Unmatched Efficiency
- Traditional/Solar Charging available

Technical Data

eWender	E 350	E 500
Windrow width up to [m]	3.5	5.0
Windrow height up to [m]	1.8	2.4
Windrow cross section up to [m ²]	3.1	6.2
Surface Utilisation [m ³ /m ²]	0.9	1.25
Machine-efficiency-class A⁺ [kWh/ yd ³]	0.05	0.05
Granular size up to [mm]	200	300
Tunnel width [mm]	3,000	4,500
Tunnel height [mm]	1,800	2,300
Turning capacity up to* [m ³ /h]	1,500	3,000
Drum speed [min ⁻¹]	0-170	0-170
Drum diameter [mm]	1,000	1,200
Transport dimensions		
Width [mm]	2,470	2,550
Height [mm]	2,230	2,730
Length [mm]	3,930	5,430
Weight ca. [kg]	8,000	11,000

*material dependend



Effortless transporting



Rotor lifts up to 90°



RECYTEC

A TURN FOR THE BETTER



O.R.S.I. SRL
Corso Alessandria 49 - 15057 Tortona (AI) - Italia
Tel. 0131-861016
www.orsitortona.it -- info@orsitortona.it

Alle Angaben, Beschreibungen und Illustrationen stehen im Sinne der Weiterentwicklung unter dem Vorbehalt technischer Änderungen.
Abbildungen können Optionen enthalten, die nicht Bestandteil der Serie sind.

